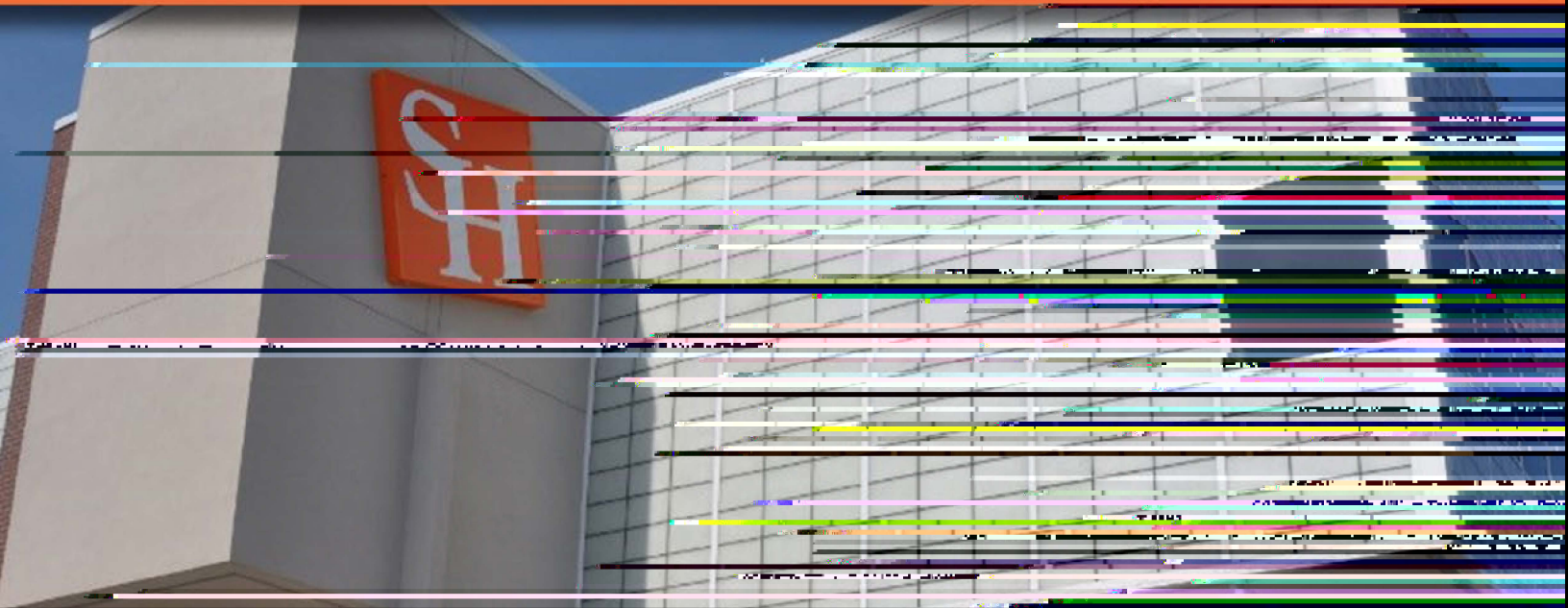




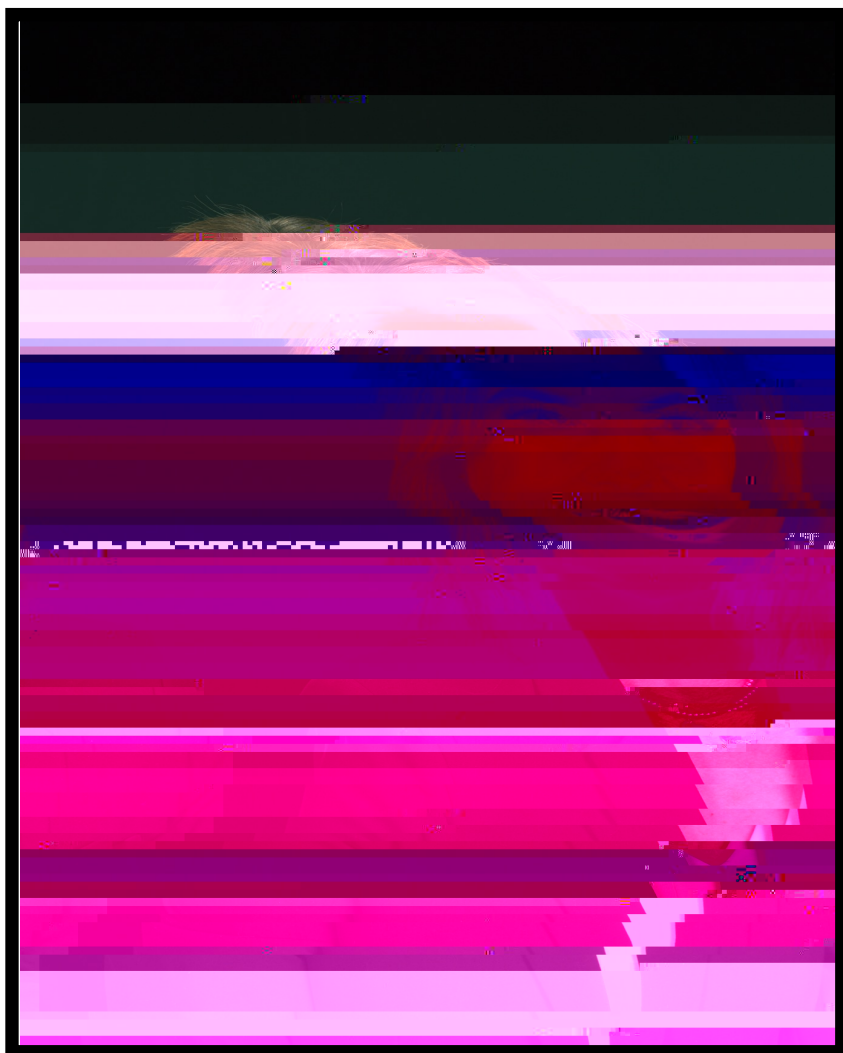
Sam Houston
State University

COUNSELING CENTER



DOCTORAL INTERNSHIP
IN HEALTH PSYCHOLOGY

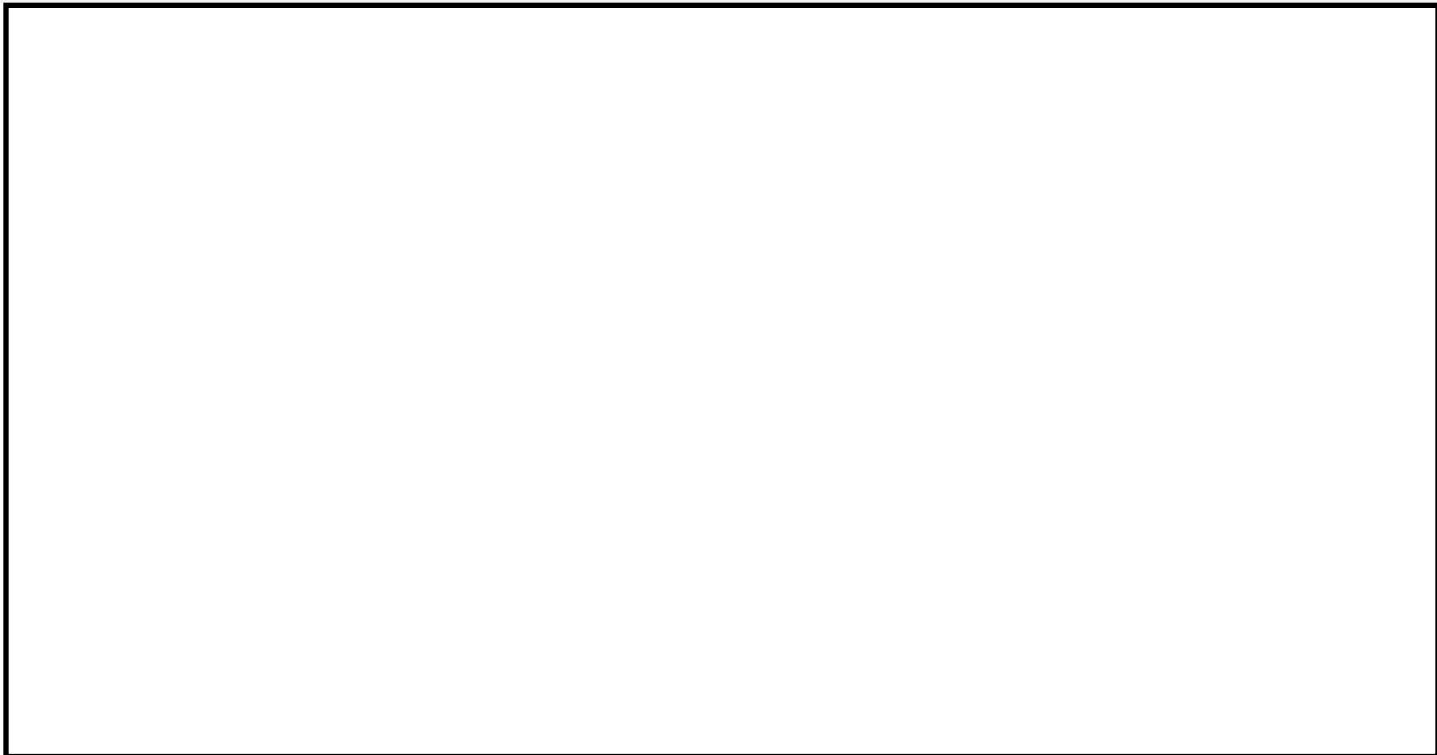




7KDQN \RX IRU \RXU LQW
WKH 'RFWRUDO ,QWHUQVKI
SV\FKRORJ\ DW WKH 6DP +RX
8QLYHUVLW\ &RXQVHOLQJ &
RXU VHQLRU VWDII DUH YHU
SURJUDPV DQG JUHDWO\ LQ
DVSHFWV RI WUDLQLQ,WDQG
LV RXU JRDO WKDW BNDFSU
EH\RQG WKH GHYHORSPHQV
VNLOOV DQG FRPSWHQFL
LQWHJUDWLRQ RI D SURIH
LGHQWLW\ ZLWKLQ WKLV W
HGG ZH EHOLHYH LQ SURYL
DQG LQWHQVLYH WUDWLRQ
SURPRWH ERWK OHDUQLQ
SURIHVVLQRQDO JURZWK 6+6
SODFH WR ZRUN DQG ZH KP
ZDQW WR EHFRPH SDUW RI
IDPLO\

)RU PRUH LQIRUPDWLRQ S
KHLWDWH WR FRQWDFW

'U 'LDQH 6WRHEQHU 0D\
(PDLO G[V #VKVX HGX
3KRQH



6 D P + R X V W R D B Q H Y H U W I B X U S X D E U Q E Y H Z L W L W Q U R O P R Y H Q W V W X G H Q W V
D Q Z H F R Q W W O B X R Q R I W K I B V W J U R V Z L X Q L Y H U L V Q H W D Z Q H R I 6 + 6 8 J J U H D W W U W Q J W
L V V G V Y H U W X I G E H R G W R U





STAFF

7KH VWDII DW WKH 6+68 &RXQVHOLQJ &HQWHU DUH GHGI
FRPSUHKHQVLYH WUDLQLQJ H[SHULHQFH 2XU PXOWLGLV
VWDII SV\FKRORJLVWV DQG PHQWDO KHDOWK FRXQVHOR
&HQWHU DOVR KDV D UREXVW SUDFWLFXP WUDLQLQJ SU
VHPHVWHU LQFOXGLQJ ERWK GRFWRUDO DQG PDVWHUV

For more information on our sta , please visit our website at:
<https://www.shsu.edu/dept/counseling/current-sta.html>

3URYLGH WUDLQLQJ DQG H[SHULHQWLDO OHDUQLQJ RSS
FRXQVHOLQJ DVVHVPHQW FULVLV LQWHUYHQWLQJ F
VXSHUYLVLRQ

3URYLGH DQ RSHQ DQG VXSSRUWLYH HQYLURQPHQW FR
PXOWLFXOWXUDO FRPSHWQH FH DQG VHQVLWLYLW\ WR L
H[SHULHQWLDO OHDUQLQJ RSSRUWXQLWLHV WR LQWHJU
@ ••ÀpÀ0HTORSPHXULWR VJ¥00\$À

PXOWLFH
HW RI VNLOOV LQ



SERVICE ACTIVITIES

' ,5 (& 7 6 (59 , & (

- , 1', 9, '8 \$/ 3 & * 27 + (5 \$ 3 ± , QGLYL GXDO WKHUDS\ LV WKH \$RUPDU\ C LQWHU & RXQVHOLQJ & HQWHU XWLOLJHV D EULHI WKHUDSRGRG OLPLWV , QWHUQV DUH DOVR ZHOFRPH WR VHH FRXSOHV
- * 528336 < & + 27 + (5 \$ 3 < 7 K & R X Q V H O L Q W H D U R E V U W S H U D S \ S P I R H U D Q J U R X S S W H P H V W D I E K Q W H U E T X L W R F G I D F L O L W D W L H Q V R Q H I D O Q X S Q C V S U L Q J V H P H V W H U D Q G W K H \ D U H L Q Y W W E I G H W L R W K R I R W M J O R M S Z H E V L W H I R U P R U H L Q I R U P D W L R Q D E R X W W \ S H V R I J U R X S V R I I H
- 2875 (\$ & ± XU @ € „ F % 5G @ 3 p € P & HQPDWLXXG

•

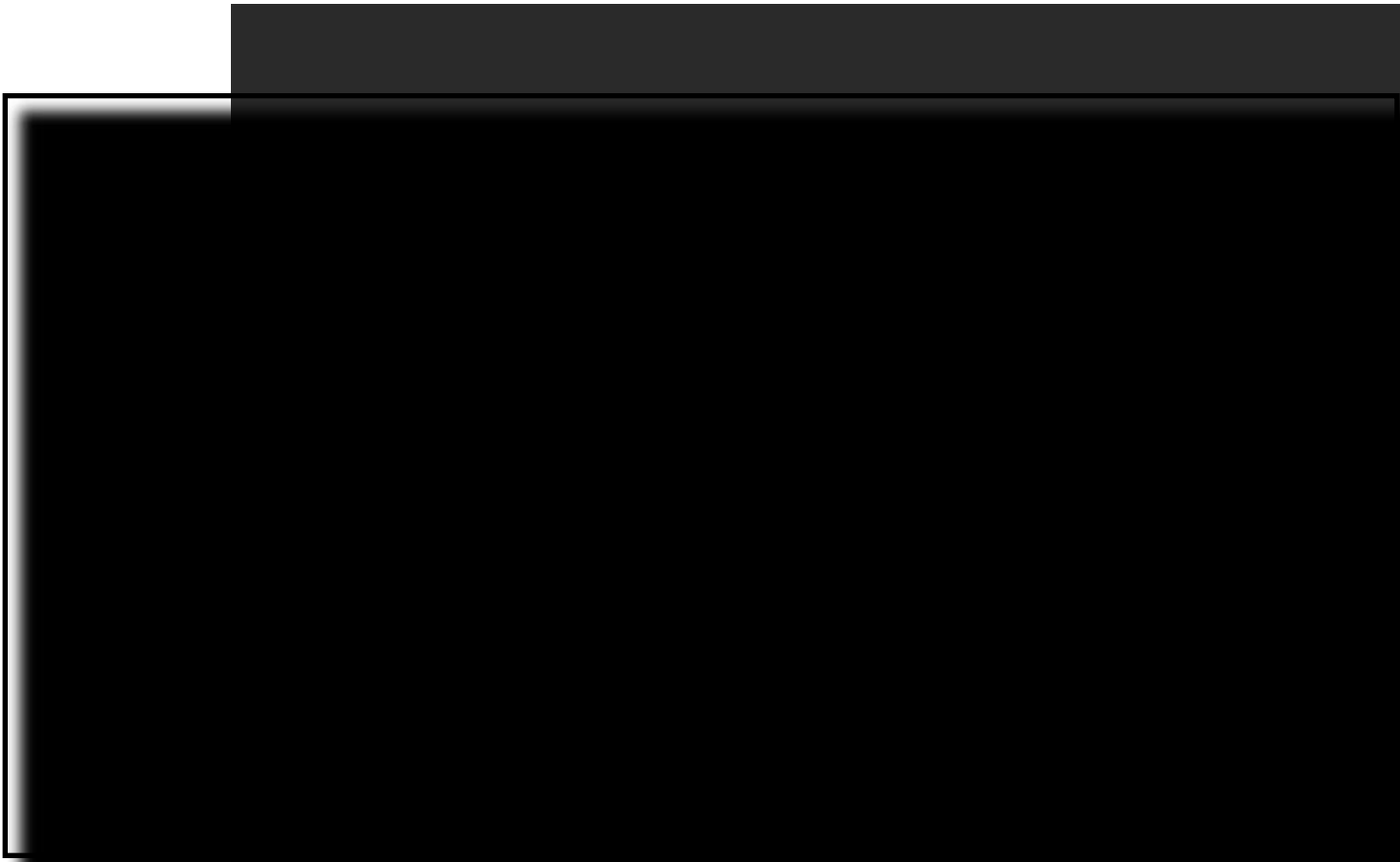
' ,5(&7 6(59,&(&217↑'

• &5,6,617(17,2±1,QWHLZLQDYMKFS SRUWRQHZA W X G H Q W V Z K L R D F O U N L Y
L G X U B Q E J X V L Q K R X V K H D O S B U W L F O S D H W H H U R Q R X F U R O V O Z W V R Q M D N R Q J
U H V S R Q W B E L V O S L M R G W H U K U R L X G H R W D V O L D R Q M Z H H D W D W L P H D Q G R F F X
D S S U R [L P D W H O \ R Q F H S H U V H P H V W H U

• :25.6+236±7KH&RXQVH&HLOQMHIHIZHVH NZR\UNV RRSYD U LRHWR SWRWIOS
HGXFVWFHDPSPKRPXPQLQVDULRHXQWKEIDQWRKLEWHDUHQYLWVSDGWLFLSDW
GHOLYHU\RIWKHVHZRUNVKRSV VHHRXUZHEVLWHIRUDOLVV

• %5,(6&5((1,1*67RDFFHVV VHUWXLGPIXVWDOOWR&RXQVH&HLOQMHIH
EULZHDIONDLQHVVVPIBQWWKWPRKVRVMS SURSVLUDYMRWVKSJUVHGSWRBQHF
LQGLWLKXDDSRZSRUNVKRVSFQWHLZLQDYMKUHH DQGRDSKZDIOHWHW
DVLGHWRVXGHHQWV ZKR FRPH LQ RQ ZDON LQ IRU EULHI VFUHHO

• 36<&+2('8&7\$,21\$\$66(660(176WXGHWQWNDQBRRPPRGDWWRQWURB
WK6HUYLFRH6WXGHZQWVKVDELQILWEMRK&RXQVH&HLOQW RU
SV\FKRHGXFVHWLVFQQDQLEOPSOVKUHEIDWDMVHVVFSHOWMRQH LQ WK
)DOO DQG WZR LQ WKH 6SULQJ



• ', '\$ & 7, & 6 \$ 1' 6 (0, 1 \$ 5 6

o : HHNO\ DUDL QHPLQV R SYDFW RZPHHW RHHN) D Q Q 6 S U L Q J
6 H P H V W H U

o : HHNO\ 'LPHQVGRQWRW\ DQG , QWPIUQDIFVHRQDOLWDOO
D Q Q 6 S U L Q J 6 H P H V W H U

o : HHNO\ *URXS 7KHUDES\ 6HPLQDU 6HULHV

o : HHNO\ 7UDXPD 6HPD QOO 6HBBMWHU

• 683(59,6,21

o , QGLYLGXDO VXSHUYLVLRQ WZR KRXUV SHU ZHHN OLFHQV

o 6XSHUYRVLURVSKHURSKDORXUZHHLWKRKB OHDGHU

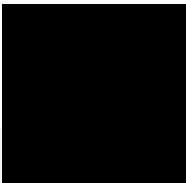
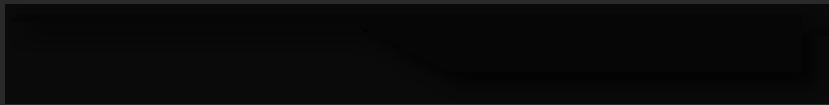
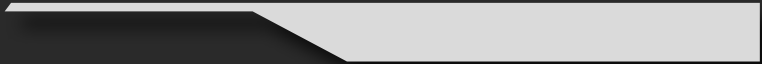
o SSFYD - sB99RKRI=" €

o *URXS VXSHUYLVLRQ RQH KRXU SHU ZHHN OLFHQVHG SV

o

75\$, 1, 1* \$ & 7, 9, 7, (

% 5 (\$. ' 2 : 1 2) \$ 7 < 3 , & \$ / : ((.



APPLICATION AND SELECTION REQUIREMENTS

2 X U Q W H U O H E W D R G X S R Q Q R I V W K Z N Z H O F R P S S O L F I D U R P W Q G H Q W
V H H N E R X Q V F G Q W H D L H S G U L H Q G R R U Q W Z K Q V I Q W H D G R D O V H
F R Q V L Z W M K W R U D L S K L O J R D E S K H I S H U L Z O F F I S G B Y L G G R R U H T X L U H
S U L R U S U H I S W U E X I B H F I L I L D X Q O Y H R X L W H F I Q Q W D S S O L F D Q W V V K
H [S H U L H Q F H Z R U N L Q J Z L W K D G X O W V L Q D Q R X W S D W L H Q W V H W

4 8 \$ / ,) , & \$ 7 , 2 F H 0 X \$ B 3 / \$ Å 0 D V L H Q F H S L S " @ p Å 0

• 6WLSHQG RI



COUNSELING CENTER