

Allegro Risoluto

Musical staff with notes, triplets, and a circled 'C' with "= 2 ?" below it.

29

Musical staff with notes, triplets, and circled 'C's.

34

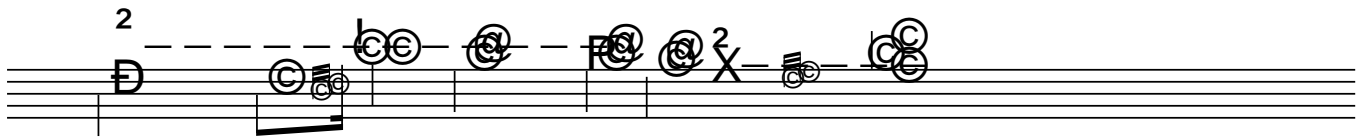
Musical staff with notes, circled 'C's, and "= 2 ?" below it.

49

Empty musical staff.



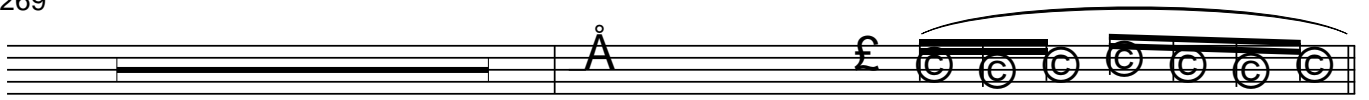




226

Musical notation for exercise 226. The piece is written on a single staff with a treble clef and a key signature of one flat (B-flat). The notation consists of a sequence of eighth notes, with five groups of three notes each, indicated by a '3' above the notes. The notes are: B-flat, C, D (first triplet); E, F, G (second triplet); A, B-flat, C (third triplet); D, E, F (fourth triplet); G, A, B-flat (fifth triplet). The notes are beamed together in each triplet. The piece ends with a double bar line.

269



288



291



294



297



346

